





# ALL IN ONE SOLAR STREET LIGHT

## BCT-OLF-25W

-  Light energy charging
-  Always bright on rainy days
-  Wide lighting range
-  Clean Energy

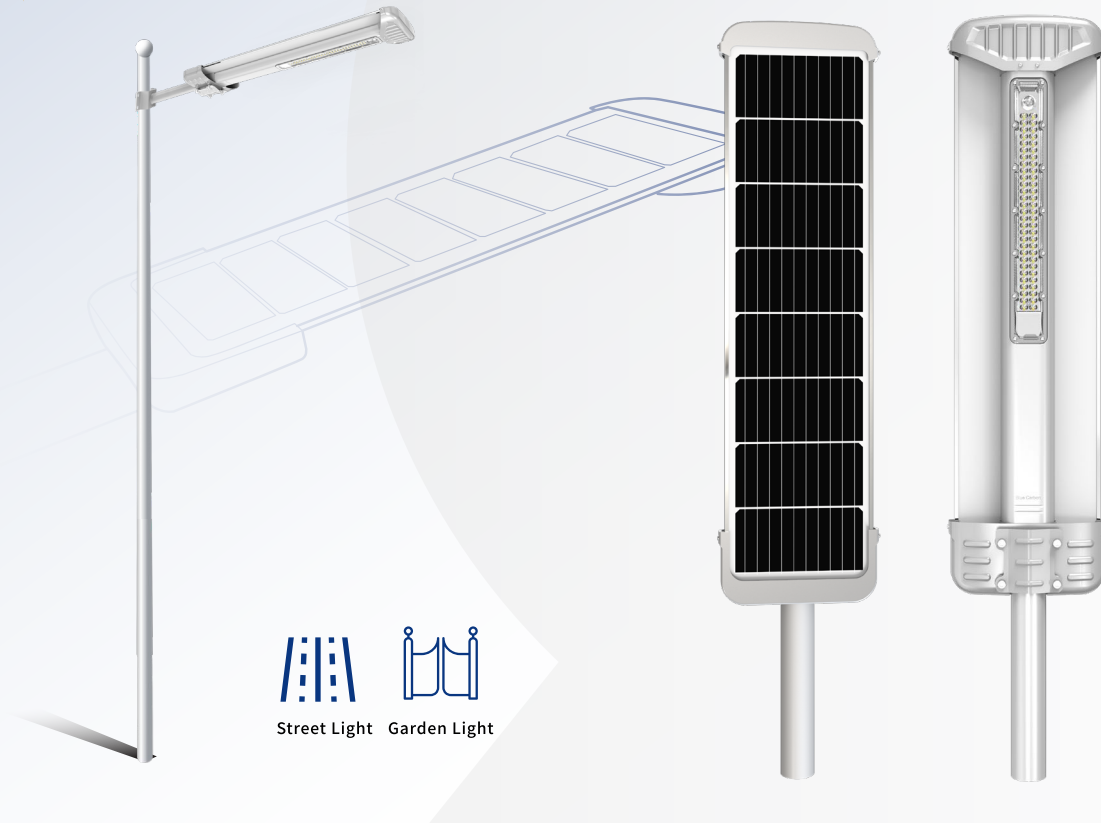


### ► Product Parameters

\*Battery may be stored up to 3 months then a freshening charge is required.

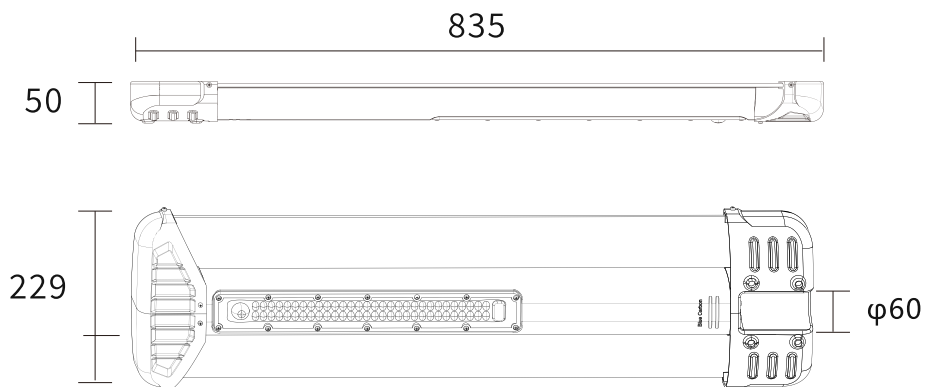
Product name	All in One Solar Street Light
Model	BCT-OLF-25W
Solar panel	25W(Mono)
Battery	3.2V/20Ah LiFePO <sub>4</sub> Battery
Light power	1260 lm
Lighting time	6+X/Intelligent power control, and can use remote control to adjust brightness and working mode.
Installation height	3-5m
Installation distance	15-20m
Lamp life	100000 hours
Installation diameter	φ60(±3) mm
Product size	835×229×50mm
Carton size	878×245×145mm (1 pcs/carton)
Gross weight	5.3kg
Beam angle	bat wing 150°70°
Color temperature	6500K,4000K
IP rating	IP65
IK level	IK08
Operating temperature	-40°C~70°C
Working humidity	10%~90%

\*Note: The above data are typical values. The actual product weight will have an error of about 5%.

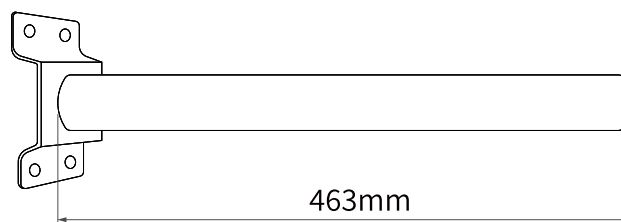


## ► Product Size:

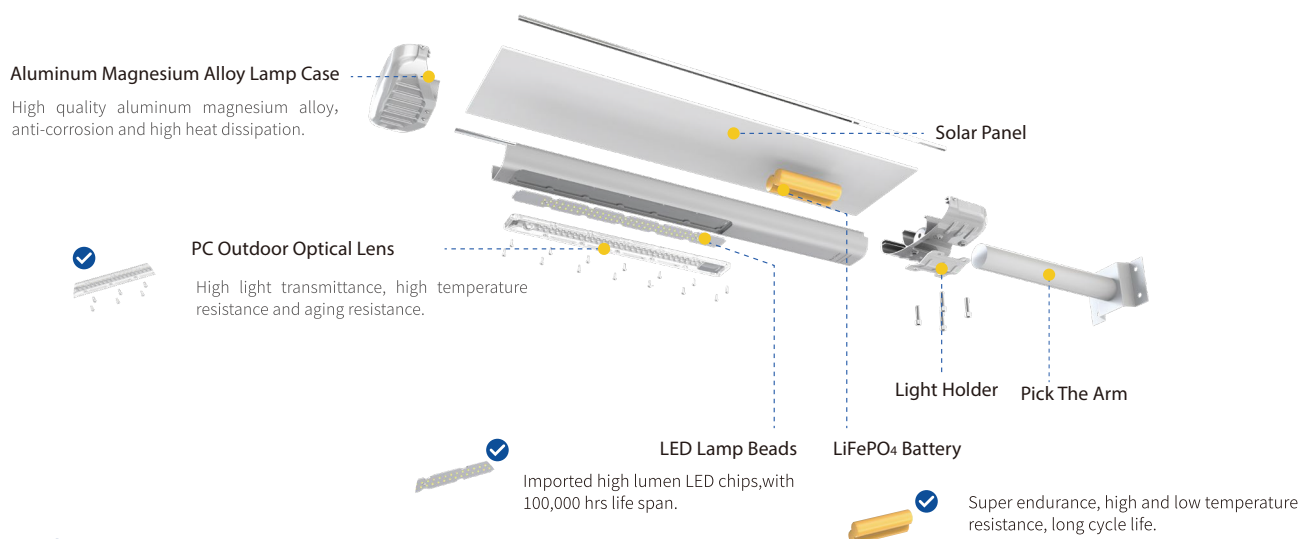
- Lamp head size chart Unit:mm



- Arm size chart



## ► Product Details Display



- Original patent design, independent mould.
- All night lighting. The light never be off no matter how many rainy or cloudy days.
- The light can be installed from Equator area to Polar regions. The working temperature is -47-70°C
- Integrated design, modular production.
- Low voltage design, safe and Reliable.
- Integrated package, convenient transportation.

## ► Packing List as Shown



## ► Remote Control Introduction



ON key: Turn on  
OFF key: Turn off  
AUTO key: Reset, 6+X overnight lighting mode

6H key: Lights off after 6 hours  
8H key: Lights off after 8 hours  
85% key: Reduce 15% power  
70% key: Reduce 30% power

## ► Installation Case

### | Applicable place:

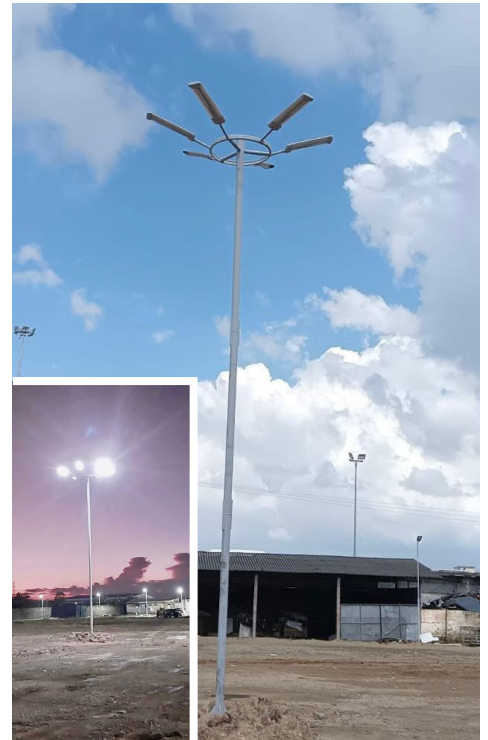
It is widely used in streets and roads, residential areas, scenic spots, parks, squares, private gardens and other public places.

The product is easy to install, no auxiliary lines required, energy saving and environmental protection, no electricity charge, long service life.



### ▲ Philippines

### ▲ India



### ▲ India