

FLOOD LIGHT WR4.0



BCT-WR4.0

10 Years
Warranty



Light energy charging



Always bright on rainy days



Wide lighting range



Clean Energy

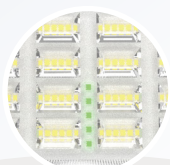
Product Parameters

*Battery may be stored up to 3 months then a freshening charge is required.

Product name	Flood Light WR4.0		
Model	BCT-WR4.0		
Solar panel	50W (Mono)		
Panel size	410×630×25×25 mm		
Battery	3.2V/45(±5)Ah LiFePO	4 Battery	
Light power	3000lm		
Lighting time	6+X/Intelligent power control, and can use remote control to adjust brightness and working mode.		
Gross weight	7.38kg		
Lamp life	100000 hours		
Lamp size	250×345×78 mm		
Lamp carton size	412×430×310mm (4 pc/carton)		
Solar panel carton size	446×663×155mm (4 Pcs/carton)		
Beam angle	bat wing 150°70°		
CRI	Ra70		
Color temperature	6500K,4000K		
IP rating	IP65		
IK level	IK08		
Operating temperature	-40℃~70℃		
Working humidity	10%~90%		

*Note: The above data are typical values. The actual product weight will have an error of about 5%.

Product Display



Charging indicator

1. Intuitive charging progress display
2. Well understand the charging status
3. Avoid over charging and over discharging

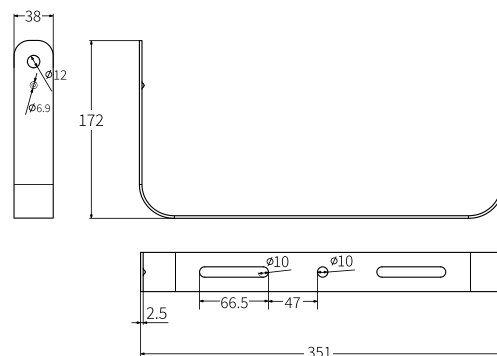
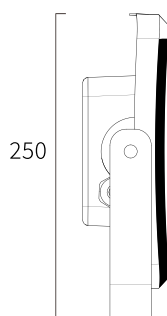
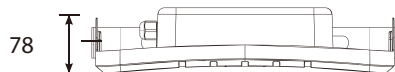
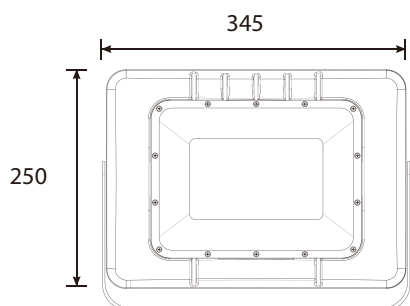


Firmer installation with positionable rotation angle.

► Product Size:

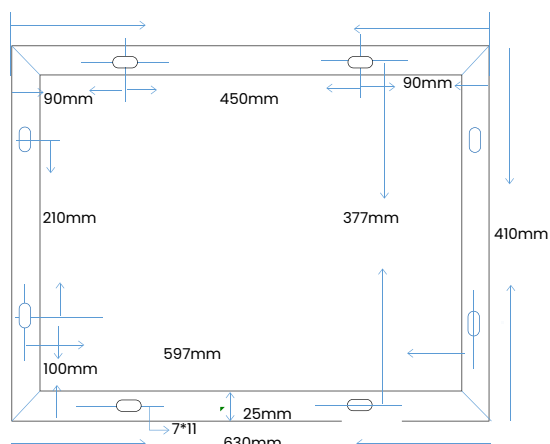
- Lamp head size chart

Unit: mm

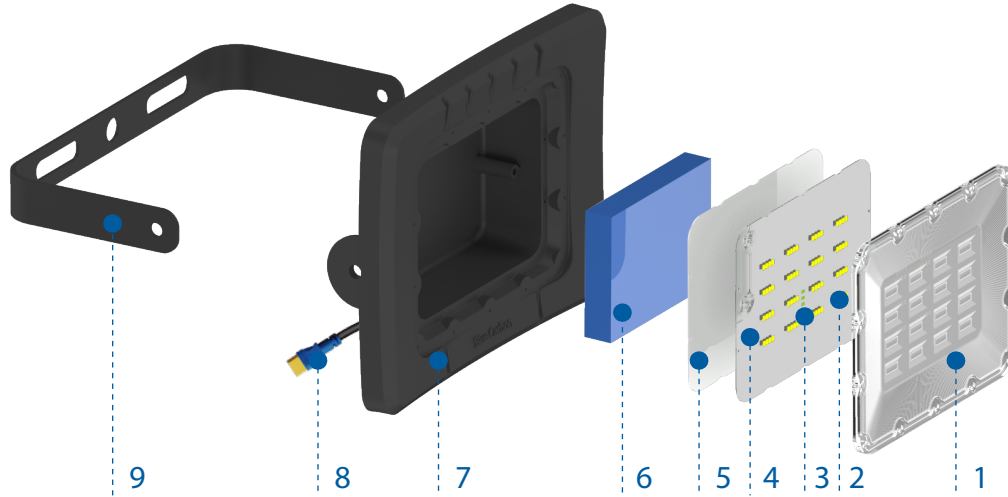


- Solar panel size chart

410×630×25×25 mm



► Product Details Display



1. PC Outdoor Optical Lens



High light transmittance, high temperature resistance and aging resistance.

2.Imported High LED Lamp Beads



Imported high lumen LED chips, with 100,000 hrs life span.

3.Charging Indicator

4.Control & Drive Integrated Lamp Board

5.Radiating Plate

6.LiFePO₄ Battery



Super endurance, high and low temperature resistance, long cycle life.

7.Aluminum Magnesium Alloy Lamp Case



High quality aluminum magnesium alloy, anti-corrosion and high heat dissipation.

8.Gold Plated Plug

Gold plated plug, safe and risk-free, no worry about connection and short circuit.

9.Bracket

- Original patent design, independent mould.
- All night lighting. The light never be off no matter how many rainy or cloudy days.
- The light can be installed from equator area to polar regions. The working temperature is -40-70°C.
- Integrated design, modular production.
- Low voltage design, safe and reliable.
- Integrated package, convenient transportation.

► Installation Case

Applicable place:

It is widely used in home lighting, streets and roads, residential areas, scenic spots, parks, squares, private gardens and other public places. Also used for night lighting of advertising board, and construction outdoor lighting, easy to install, energy saving, no need to pay electric

The product is easy to install, no auxiliary lines required, energy saving and environmental protection, no electricity charge, long service life.

Flood Light WR4.0

